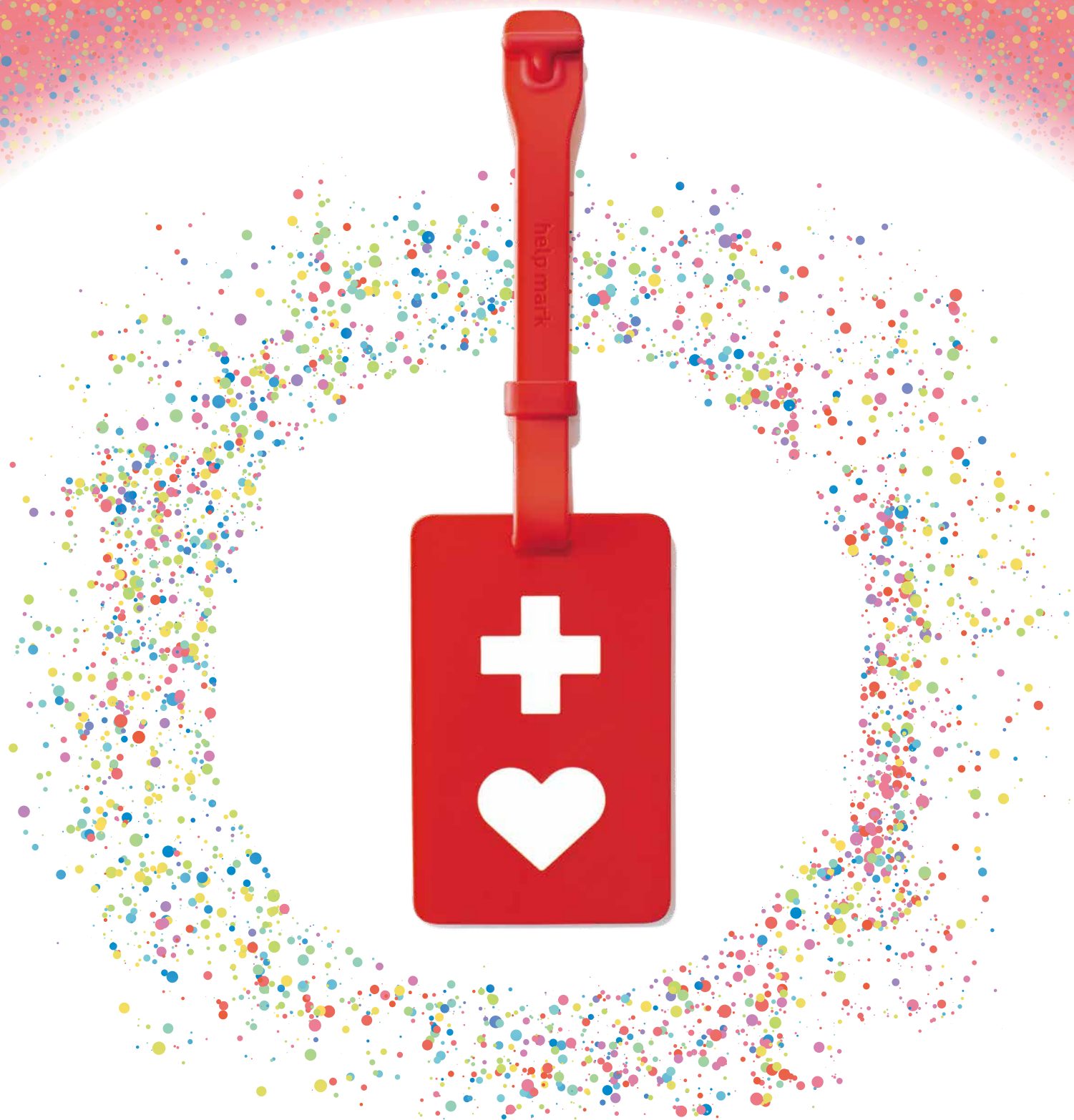


Do you know about the Help Mark?



The Help Mark is
worn by people who may require assistance,
even if their conditions are not readily apparent.

This includes:



Those who have prosthetic limbs or joints



Those who have internal health issues or serious illnesses



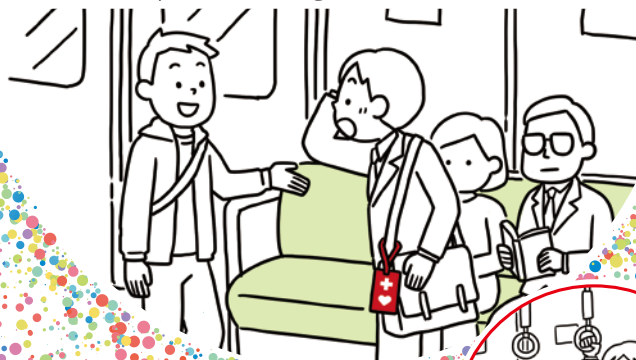
Those in the early stages of pregnancy

If you see someone wearing the Help Mark:

case.1

Please offer your seat.

Although someone may have a healthy appearance, they may have difficulty standing on a train or bus.



case.2

Please offer assistance to those that need it.

Some people may have difficulty handling bus or train trouble or unexpected events. Others have difficulty using the stairs or moving around.



case.3

Please assist those with a Help Mark in getting to safety in the event of a disaster.

Some people may find it difficult to understand the situation or to quickly evacuate on their own.



The Help Mark is distributed to those who need it.

[The Help Mark is available at:]
Toei Subway station offices (excluding some stations), Toei Bus depots, Toden Arakawa Line Depot, Nippori-Toneri Liner station offices (Nippori and Nishi-nippori stations), Yurikamome station offices (Shimbashi and Toyosu stations), Tama Monorail station offices (excluding some stations), Tokyo Metropolitan Welfare Center for the Physically and Intellectually Disabled, Tokyo Metropolitan hospitals, hospitals operated by the Tokyo Metropolitan Health and Hospitals Corporation, and other locations